

HOME & DECOR

SINGAPORE

come dine
with me

42 items to dress up your dining
room + fun partyware buys

Direct
from UK
London
Design
Festival
report

Where to
get retro
metal
grilles

Property
New
homes in
mature
Bukit
Merah
page 140

NOV 2016



\$6.00



Walk through
this home in our
digital edition.
See page 22.

A RAW DEAL

What started as a request for
an easy-to-clean home became
an ultra-chic picture of
industrial minimalism.

WHO

A couple in their 20s

HOME

Two-and-a-half storey
terrace house
in Thomson

SIZE

1,808sqf (land),
3,010sqf (built-up)

RIGHT
The original glass
panel at the front of
the house was kept
to open up the space.
The solid wood
surfaces of the dining
table and bench from
Knockknock add a
touch of warmth.
Cushion and black
and white pots, all
from Make Room. ▶





LEFT
Ed customised the wall-mounted shelves in the dry kitchen for the homeowners to display their knick-knacks and alcohol. Foscarini lamps from Xtra hang above the kitchen island. Green marble board, striped cups, ampersand ornament, and black vase, all from Make Room.

RIGHT
The homeowners stash beverages in the dry kitchen's built-in fridge.

BELOW
Individual coffee tables from The Beuro are grouped together in the living room for an interesting visual effect.



Daphne Chua and her partner wanted an industrial style for their house as it was "easy to clean"; but the raw elements and "authentic" feel which their designer Ed Ong of Dwell incorporated in the design, soon grew on them. The renovation, including furnishings, cost \$500,000.

"I wanted the industrial style to come through as authentically as possible," shares Ed, who used construction beams or metal I-beams at the front and back of the ground floor of the home. He also clad the walls on the first floor, as well as the stairwell and staircase, in concrete screed. The latter sports no-frills metal railings and tension cables. For the flooring, the matte grey tiles from Hafary have a concrete-like feel underfoot that adds to the sensorial experience.

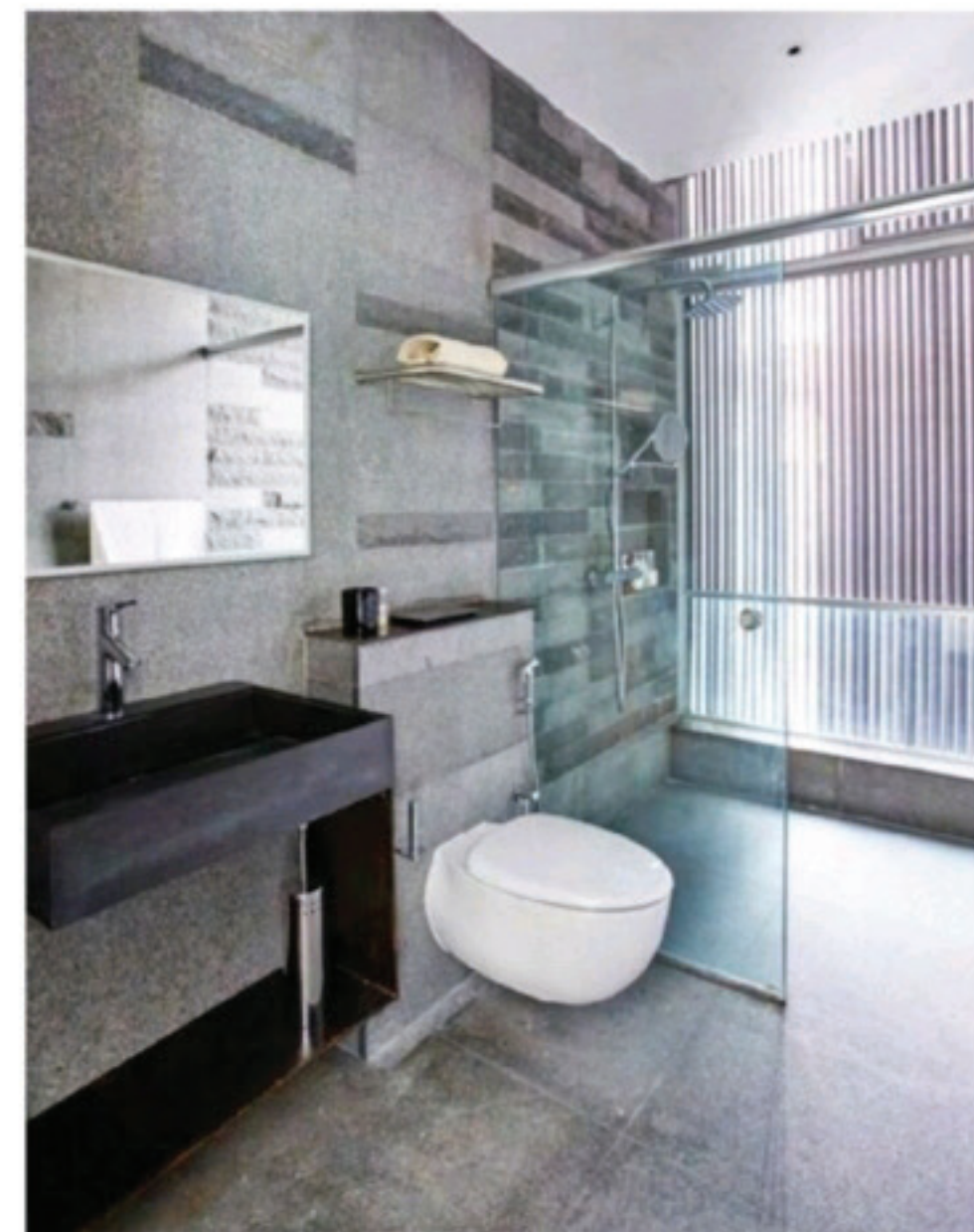
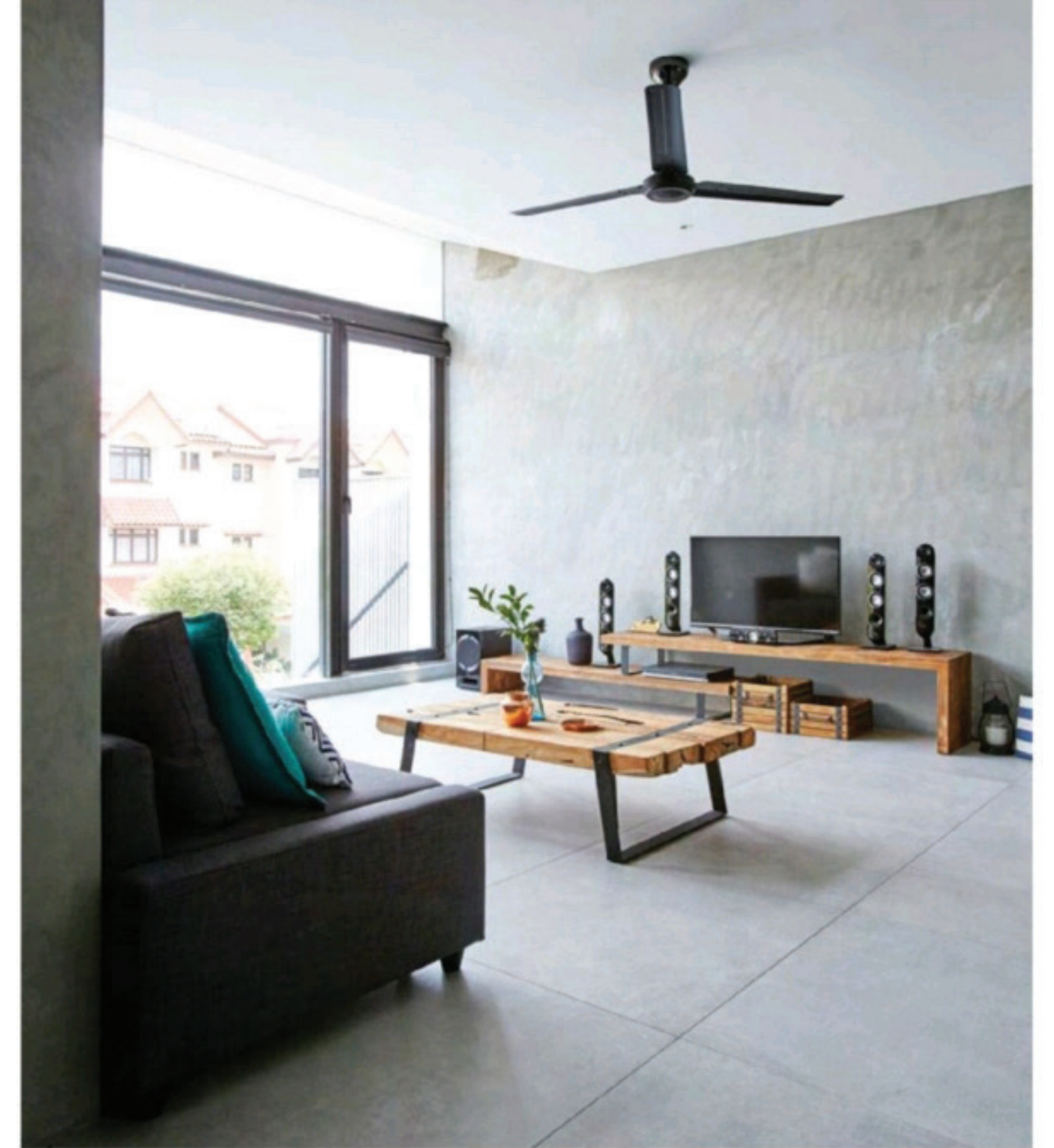
The heart of the home, the dining-cum-dry kitchen, is where the homeowners spend most of their time, especially when they have guests over. The island has a grey Caesarstone countertop; the same material is used for the kitchen countertop, which segues into the TV console in the living room. "I wanted a seamless and clean look that extends all the way to the living room. ▶



RIGHT
To complement the industrial style of the home, Ed stripped the Bosch hood in the wet kitchen and exposed the duct.



LEFT
Ed used metal sheets to clad the flooring of the backyard, to complement the industrial style of the home.



LEFT
Only minor changes were made to the bathroom on the second floor. The new black metal sink from Bretz & Co and the metal louvres echo the raw feel of the ground floor.

ABOVE
"The second floor is for guests to enjoy when they stay over," shares Daphne. The coffee table and TV console are from Journey East. Blue glass bottle, copper pot and copper tray, all from Make Room. ▶



LEFT
The interiors of the master bedroom are kept simple and cosy, perfect for the couple to unwind in. The bedside table is from Crate & Barrel.

BELOW
The original skylight was kept, which allows natural light to illuminate the staircase during the day.

OPPOSITE
Beautifully designed Philippe Starck fittings from Hansgrohe create an understated but luxurious look in the master bathroom.



The stone supplier said it was the longest piece he's ever done for a residential project," says Ed.

The interior designer separated the wet kitchen from the common areas with glass walls, held up by a frame of metal beams. The beams were positioned carefully to ensure that they don't obstruct the view that looks out into the dining and living areas.

Upstairs, the home's attic was transformed into a master bedroom suite with an open-concept bathroom. "We wanted the bedroom to have a calming effect," shares Daphne, of the only space in the home which has wood-look tiles. "We also wanted a resort-style bathroom, where we could feel relaxed in, and specifically told Ed to create the pebble flooring!" she adds. ●

WHERE TO GO
Dwell Interior Design, TEL: 6883-1005

